

Air Pressure Differential Sensor

A comprehensive solution that includes monitoring air pressure between rooms to maintain a safe environment.

Our **Air Pressure Differential Sensor** ensures that the air pressure is consistently maintained within specific ranges, preventing the spread of contaminants and infections.

By ensuring proper air pressure differentials, organizations can enhance safety, comply with regulations, and protect the well-being of patients, employees, and products.

*Includes NIST Calibration Certificate



FEATURES

- Real-time alerts and notifications
- Automated compliance reporting system
- Simple mobile app configuration, accessibility and monitoring
- US-based phone support
- Lifetime warranty with software subscription



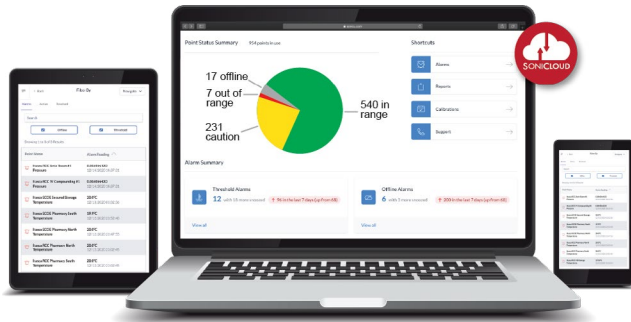
MONITORING SPECIFICATIONS

Temperature Range ± 4 in water column

Accuracy $\pm .50\%$



Our Kit Includes:



SONICLOUD – SOFTWARE ACCESS

All Sonicu monitoring solutions include SoniCloud, a modern, scalable, monitoring platform that includes software and firmware updates, ensuring future compatibility and data storage.

SONISHIELD DUO

The most powerful and easy-to-use wireless monitoring device available that wirelessly transmits critical sensor data to the SoniCloud platform for 24/7 automated monitoring, visibility, and regulatory compliant reporting.



AIR DIFFERENTIAL SENSOR

Monitors air pressure between rooms to maintain safe environment. For healthcare, pharmaceutical, construction, and HVAC. Pickups include air duct, wall plate, and ceiling mount.

POWER ADAPTER

Reliable and continuous operations ensuring that devices are consistently powered and able to capture and transmit data accurately.

