

Warm-Buffered Sensor

We have the ideal solution for a variety of applications in warm environments.

From warming ovens to incubators and blanket warmers, the **Warm-Buffered Sensor** provides accurate and reliable temperature monitoring in medical, research, and industrial settings.

We help you optimize your processes, improve product quality and ensure compliance with regulatory requirements.

*Includes NIST Calibration Certificate



MONITORING SPECIFICATIONS

Temperature Range	0°C to 105°C / 32°F to 221°F
Accuracy	+/- 0.50%

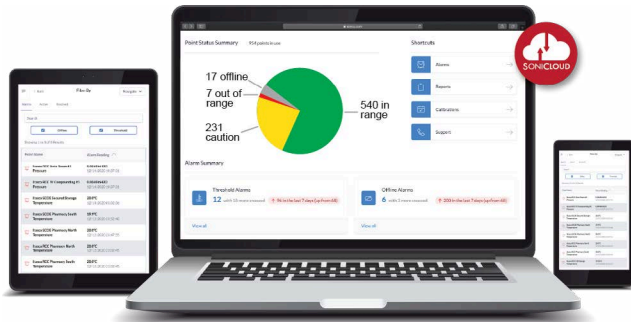
FEATURES

- Real-time alerts and notifications
- Automated compliance reporting system
- Simple mobile app configuration, accessibility and monitoring
- US-based phone support
- Lifetime warranty with software subscription



Enables you to maintain the desired temperature levels in warm environments, providing you with peace of mind and allowing you to focus on your work with confidence.

Our Kit Includes:



SONICLOUD – SOFTWARE ACCESS

All Sonicu monitoring solutions include SoniCloud, a modern, scalable, monitoring platform that includes software and firmware updates, ensuring future compatibility and data storage.

SONISHIELD DUO

The most powerful and easy-to-use wireless monitoring device available that wirelessly transmits critical sensor data to the SoniCloud platform for 24/7 automated monitoring, visibility, and regulatory compliant reporting.



WARM-BUFFERED SENSOR

Use for measuring temperatures in warm environments.

Applications: Warming ovens, incubators, blanket warmers in medical, research, industrial, and more!

POWER ADAPTER



DOOR CONTACT SENSOR (OPTIONAL)

