

# SAFETY, COMPLIANCE & EFFICIENCY

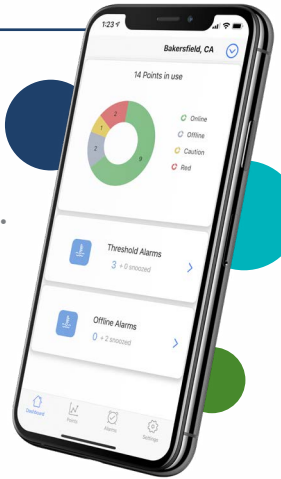
- Asset Protection
- Regulatory Compliance Automation
- Reduced Manual Processes

*Trusted by ~600 clients in all 50 states for simple and affordable temperature and environmental monitoring.*

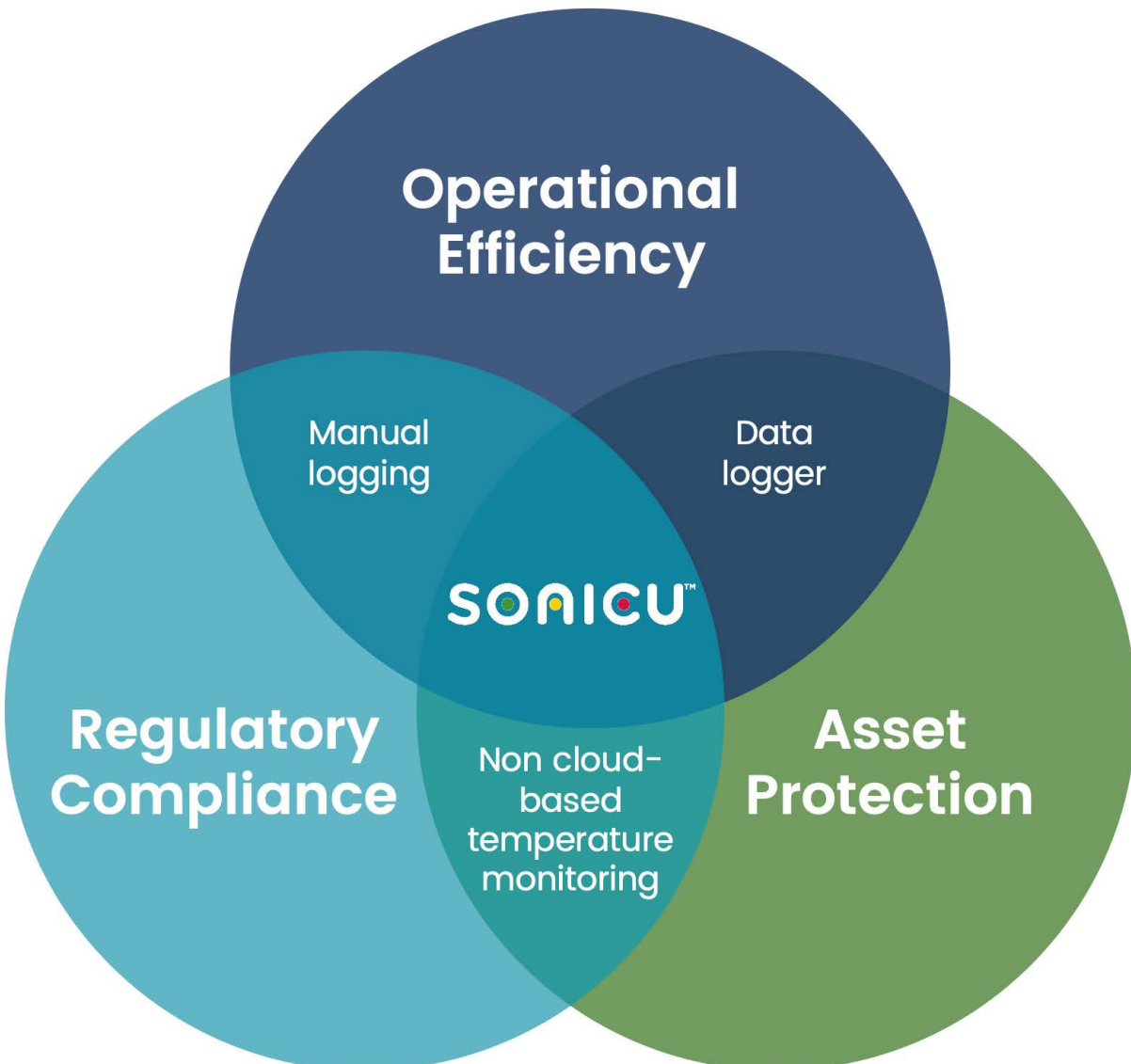


Simple and affordable asset protection and compliance automation.

- One solution: every application
- When there's no way back: Super asset protection
- Simple management tool: Monitoring anything from anywhere



Flexible transmission options and powerful redundancy for maximum asset protection and compliance readiness.



**Our customers trust Sonicu –**  
from our software to our hardware to our customer support,  
we are there to support you.

**“Cost competitiveness, great customer service, great control over the monitoring system, and low maintenance. You can’t beat that.”**

**Misa Hata**

Laboratory Director and Regulatory Affairs Coach  
Ohio University Innovation Center

**WATCH VIDEO**





# THE URGENT NECESSITY: Failure is not an option

With irreplaceable assets and public safety protection in play, temperature monitoring failure is not an option.

A 2012 freezer malfunction at Harvard Medical School-affiliated McLean Hospital severely damaged one-third of the world's largest collection of autism brain samples. The Boston Globe reported that the loss set research back by a decade.

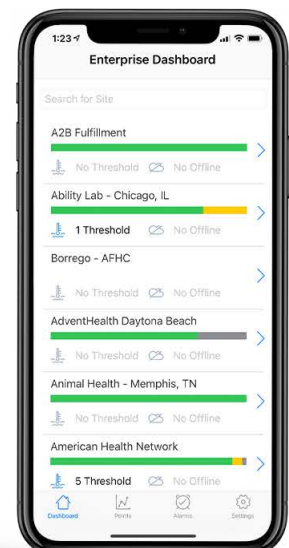
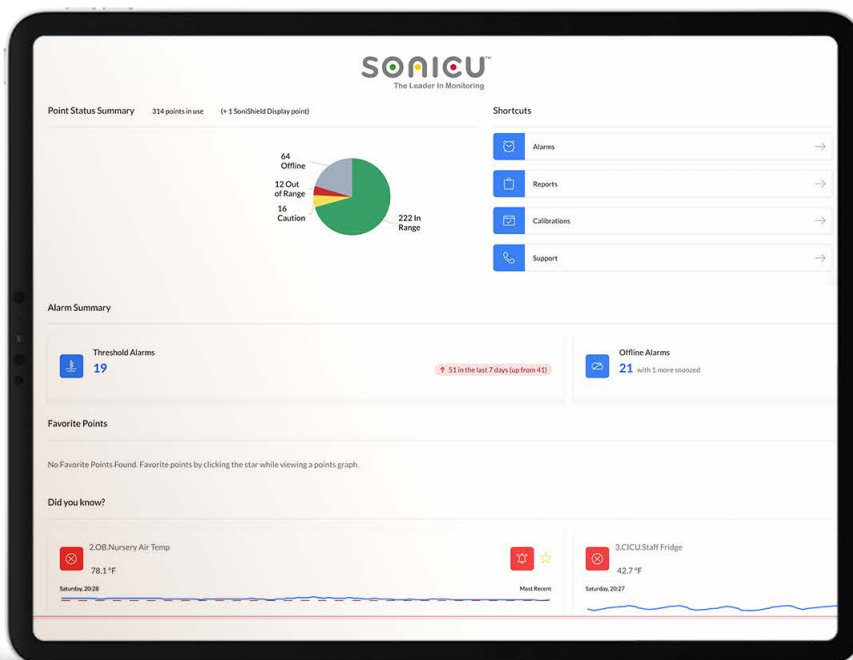
More recently, back-to-back failures at two US fertility clinics resulted in the loss of thousands of frozen human embryos. A reproduction technology expert labeled the losses "beyond stunning."

In both cases, the assets stored and monitored were simply irreplaceable.

On an arguably less catastrophic but equally important scale, protection of vaccines, pharmaceuticals and other temperature-sensitive assets also depends on a reliable, efficient temperature monitoring system.

Compliance breakdowns, while not as potentially devastating as a disastrous asset or inventory loss, bring their own brand of negative consequences to an enterprise in the form of sanctions, certification loss or income interruption.

## Status Summary and Enterprise Dashboard



# CUSTOMIZABLE SOLUTIONS for your unique requirements

Rarely is there a one-size-fits-all solution in the temperature monitoring arena. The healthcare industry alone presents significant challenges in terms of specialized needs.

Operating suites, pharmacy refrigerators and freezers, clean rooms, blanket warmers and dining services are just some of the environments that must be monitored to ensure safety, preserve quality and promote patient experience.

Life science and research depend on strict-tolerance monitoring to preserve and protect years of invaluable research assets.

Cold storage, warehousing, food production and transport also demand a flexible, robust monitoring platform that can scale to expanding needs. The integrity of pharmaceuticals, vaccines and food products has a direct impact on public safety.

In addition to the technical demands of monitoring a broad array of temperature applications, a complex regulatory scheme mandates a variety of periodic reporting requirements.

Regulatory bodies such as the CDC, VFC, CMS, the Joint Commission, FDA, and USDA require strict reporting compliance. Sonicu provides an all in one, comprehensive solution to all of these issues.



## APPLICATIONS & INDUSTRIES



Healthcare



Food Service



Research/  
Laboratories



Industrial/  
Manufacturing



Building  
Automation

CELL



WIFI



ETHERNET



Sonicu provides access, alarming and archiving 24/7/365 via any internet-enabled device.

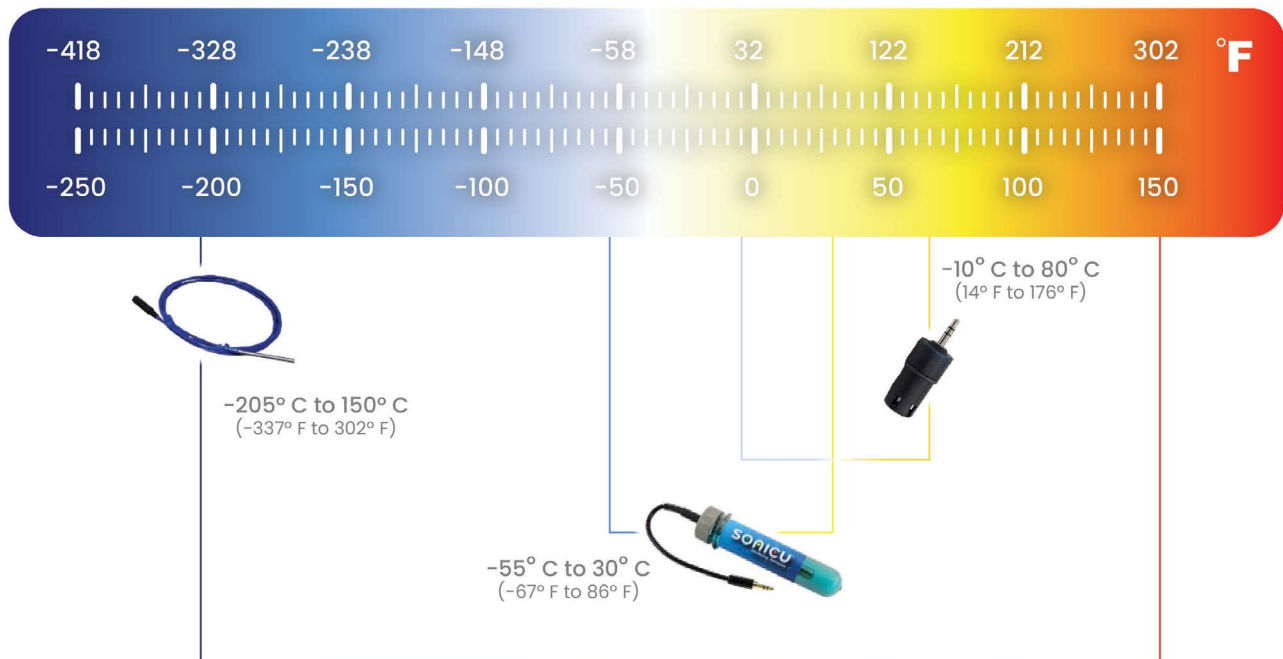
# COMPLIANCE. SAFETY. REDUCED MANUAL PROCESSES.

## Your Asset Protection and Compliance Automation Solution

Whether hot or cold, Sonicu has sensors to fill all of your temperature monitoring needs.

Monitoring temperature and device status is quick and easy whether on desktop or mobile, and customizable alert chains fit any organizational requirement.

### Ranges of Temperatures



Soniku's temperature monitoring solutions provide safety and protection for all temperature applications and automate logging, reporting and regulatory compliance.

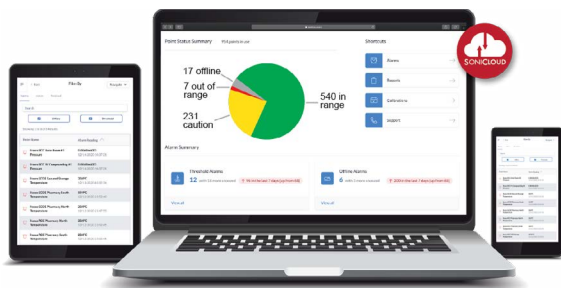
Soniku wireless technology and cloud-based platform are cost-effective and easy to implement with no hardwiring back to existing IT or BAS platforms.



## Wireless Sensors and Probes

Rugged and reliable hardware installed professionally or easily with our app-based wizard to capture all your critical data. Simple annual calibration with the SNAP program.

[LEARN MORE](#)



## SoniCloud Dashboard and Mobile App

All your data. In one simple location with powerful alerts, reports and redundancies to protect your assets and people.

[LEARN MORE](#)



## Seamless Calibration and NIST Compliance

Simple calibration renewal with Soniku's SNAP calibration program keeps your facilities compliant.

[LEARN MORE](#)



## Unwavering Customer Support

Soniku Academy for on-demand training and American-based phone support.

[LEARN MORE](#)

# Temperature Monitoring Kits

## Single Glycol Temperature Monitoring Kits

Monitor a single fridge or freezer and protect vaccines, medications, research or food. Installs and configures in under an hour.

**Kit Includes:** SoniShield Duo, digital glycol sensor (with NIST Certificate), 5V DC power supply, 6ft sensor cable



## Dual Glycol Temperature Monitoring Kits

Monitor a combination fridge or freezer to protect food, research, medications, or vaccines with only a single communicating meter. Installs and configures in about an hour.

**Kit Includes:** SoniShield Duo, 2 digital glycol sensors (with NIST Certificates), 5V DC power supply, 6ft and 15ft sensor cable.



## Dual Non-Buffered Temperature Monitoring Kits

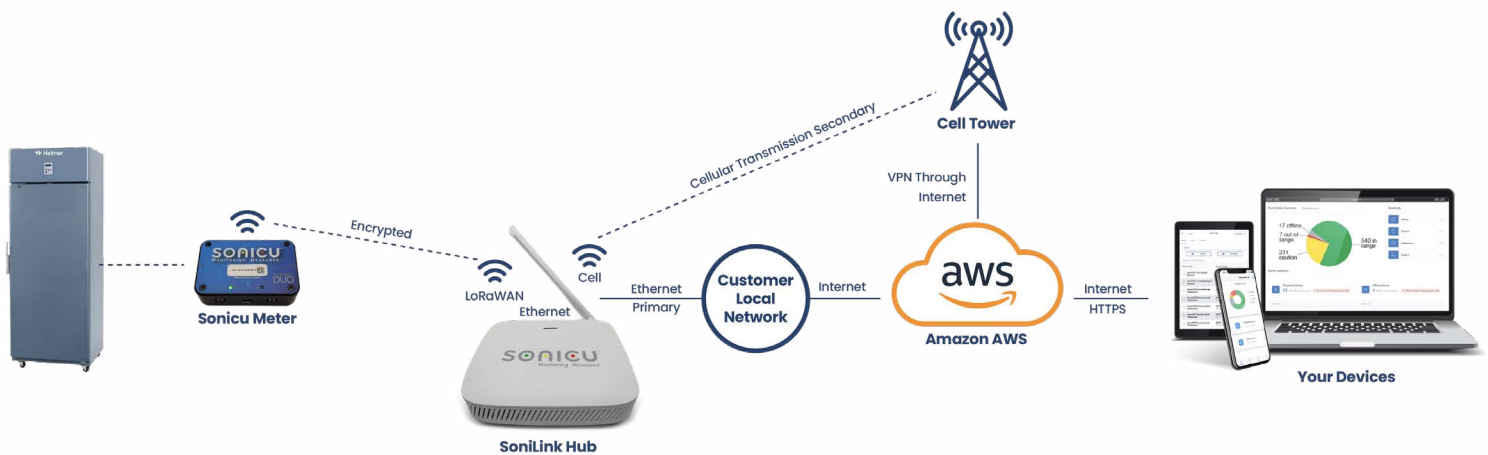
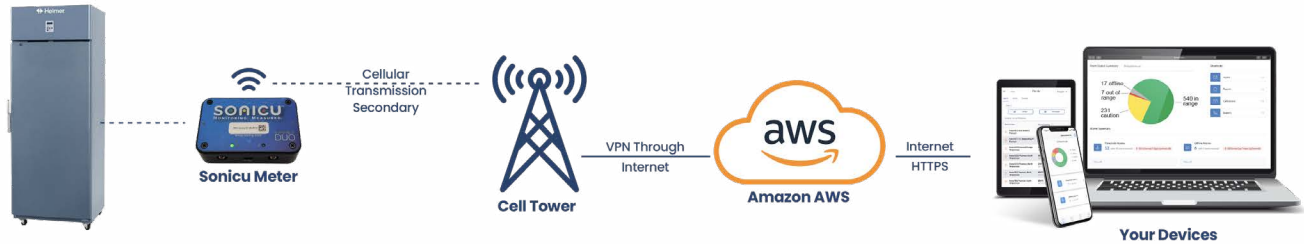
This kit monitors either warm or cold temperatures for two, adjacent devices where a buffer medium is not required.

**Kit Includes:** SoniShield Duo Meter, 2 digital non-buffered sensors (with NIST Certificates), 5V DC power supply, 6ft and 15ft sensor cables.





# Sonicu offers flexible connectivity options to fit every need.



## Wi-Fi – Cellular – SoniLink

A connectivity option for every scenario

# Katherine Shaw Bethea Hospital



*“Once I did it once or twice, it was really no big deal to efficiently get in and out of each location without any hassle.*

*The mobile app installation (wizard) piece made it really easy to follow step by step and your team was great to work with to get the system set up the way we wanted.”*



## Luke Herbert

Pharmacy Director

Installed dozens of pharmacy temperature monitoring solutions at his remote Illinois clinics

[READ CASE STUDY](#)

## Typical Applications include



### TEMPERATURE

Refrigerators  
Freezers  
Walk-In Cooler  
Refrigerated Warehouse  
Cold-Chain Distribution



### TEMPERATURE

Blanket Warmers  
Incubators  
Food Warmers  
Food or Livestock Producers  
Industrial Applications



### HUMIDITY

Compounding Rooms  
Warehouses  
Clean Rooms  
Surgery Rooms  
Research Labs



### DIFF. AIR PRESS.

Compounding Rooms  
Surgeries and Isolation Rooms  
Clean Rooms  
Construction Sites  
HVAC Systems



### CRYOGENIC

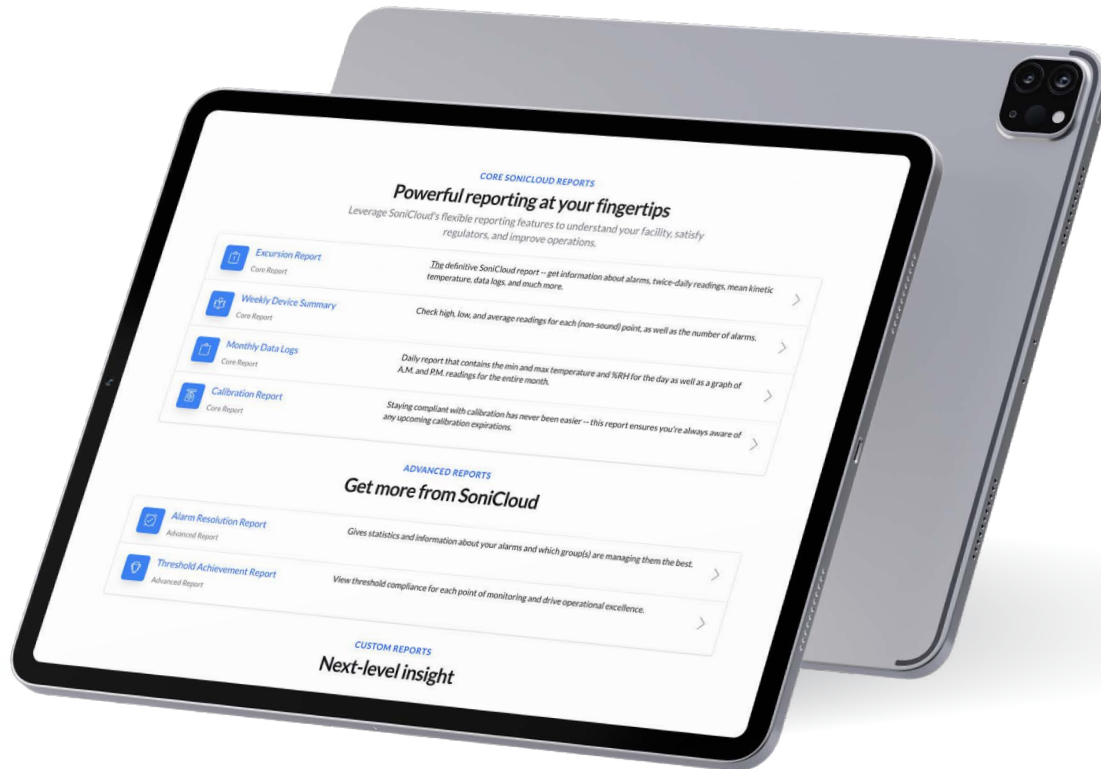
Cryogenic Freezers  
Liquid Nitrogen Dewars  
Cryotherapy  
Biologic In-Vitro  
Flash Freezing

CO<sub>2</sub>

### INCUBATOR

Incubator  
Life Science Research

# Compliance and Operational Reporting



Safety, protection and compliance all depend upon a reliable, consistent and proven temperature monitoring system.

Enterprises from healthcare and research to cold-storage warehousing all face similar problems and obstacles: outdated technology, limited time/staff resources and inefficient compliance strategies.

Server-based solutions lack the safety and security of modern cloud-based platforms. Local servers and hardware also require costly maintenance in terms of manpower and dollars. Cloud-based systems are more cost-effective, more reliable and provide instant access to critical data when it is needed most.

Regulatory schemes and reporting requirements prescribe strict monitoring and logging procedures that – without automation – take staff away from core responsibilities, and drain away already tight resources.

Finally, monthly and periodic reporting along with annual probe re-calibration become additional burdens on staff resources to compile and format mandatory reports. Sonicu temperature monitoring meets and eliminates all of those problems.



# With Sonicu, you can monitor any time, any place. Simply.



## SAFETY

**Sonicu alarming sets Sonicu apart when it comes to protecting assets and the public. SMART alarm software features include:**

- Custom thresholds with user-set high/low buffers to match monitored asset/equipment parameters for the reduction of alarm fatigue.
- Off-line alarm features such as batch alarming notification and auto-clear for improved operational efficiency.
- Alarm reminders to ensure all prior alarms have been addressed and cleared.
- Tiered, escalatable alarming to ensure proper notification goes to the right people at the right time onsite or off.



# With Sonicu, you can monitor any time, any place. Simply.

## Floorplan



## EFFORTLESS REGULATORY COMPLIANCE

- Sonicu SNAP Calibration makes annual or recurring probe recalibration plug-and-play, eliminating downtime, expense and administrative worries. New calibrated probes arrive on demand with online certificates and documentation.
- Consistent automated logging and auto-formatted reporting downloads streamline regulatory compliance, ensuring historical accuracy and improving efficiency.
- Intuitive software allows annotation and corrective action history to be included in regulatory reporting.

## IMPROVED OPERATIONAL EFFICIENCY

- 
- The image displays two side-by-side smartphone screens showing the 'PointSense' mobile application interface. Both screens are for the 'Ability Lab - Chicago, IL' location.
- Left Screen: Zone Dashboard**
- Header:** 'Zone Dashboard' with a location subtitle 'Ability Lab - Chicago, IL' and a refresh icon.
  - Search:** A search bar labeled 'Search for Point Name'.
  - West Pharmacy - Window - D3DA:**
    - West Pharmacy - Window - Temperature: 68.9 °F
    - West Pharmacy - Window - Humidity: 58.9 %RH
  - Gateway - SC Pharmacy Carousel 1 Window:**
    - South Central Pharmacy - Carousel 1 Window Transmri: -80.5 dBm
  - East Pharmacy - IDS - 4E01:**
    - East Pharmacy - IDS - Temperature: 69.3 °F
    - East Pharmacy - IDS - Humidity: 58.3 %RH
  - North Pharmacy - IV Cleanroom Anteroom - D3CE:**
    - North Pharmacy - Cleanroom
  - Bottom Navigation:** Dashboard (selected), Points, Alarms, Settings.
- Right Screen: Active Alarms**
- Header:** 'Active Alarms' with a location subtitle 'Ability Lab - Chicago, IL' and a refresh icon.
  - Search:** A search bar labeled 'Search for Point Name'.
  - Active Alarms List:**
    - NW Pharmacy - Hazardous Anteroom - Humidity:** 72.7%RH, July 29 2021, 11:25
    - Chemo IV Cleanroom - Humidity:** 73.1%RH, June 23 2021, 1:10
  - Bottom Navigation:** Dashboard, Points, Alarms (selected), Settings.

Area: P25.625 Floor

Device: **RT-P25-625-Floor** with L64-1000-0.5

Probe Serial: 2D0000093334F28

Unit of Measure: °F

**SONICU™**  
The Leader in Monitoring

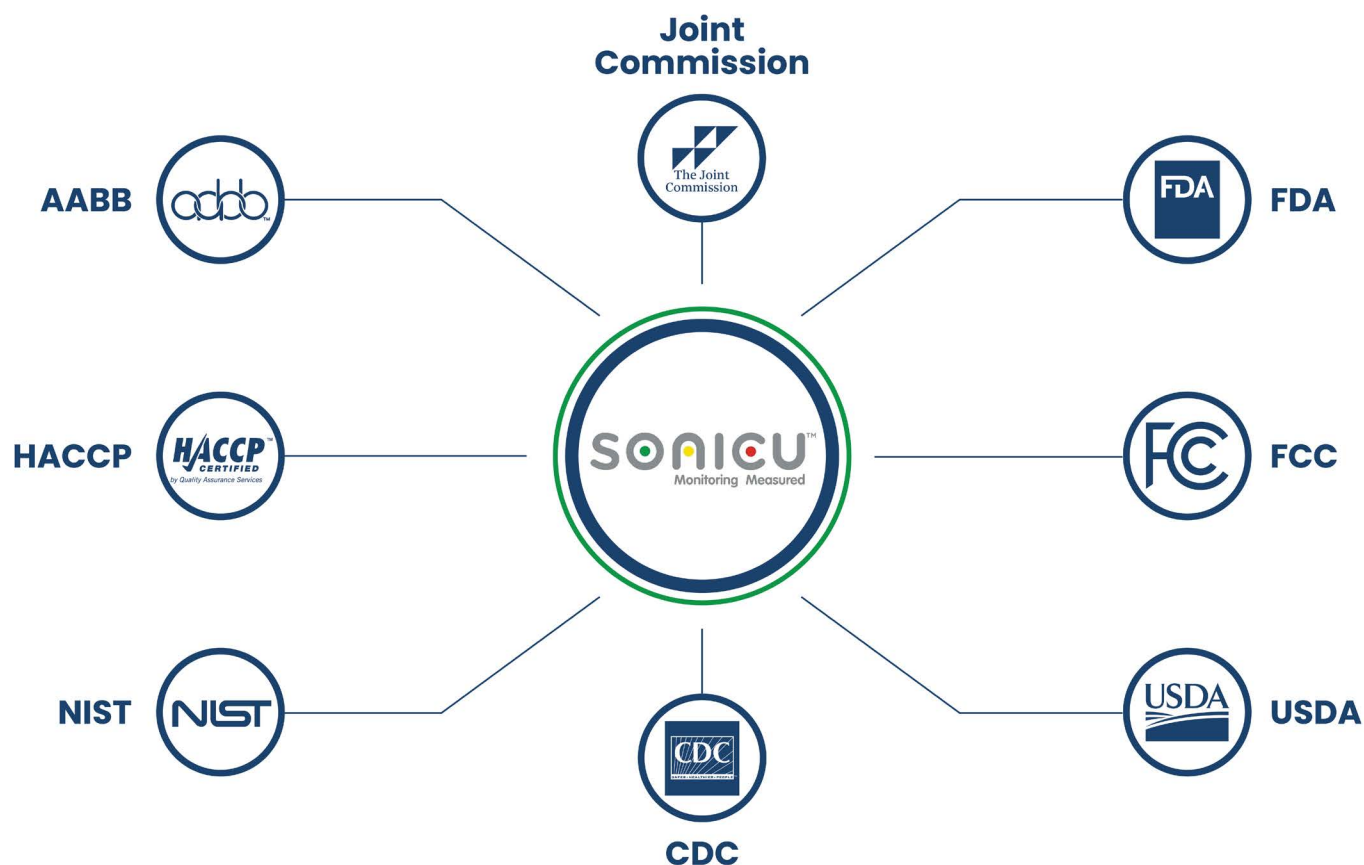
### Data Summary

Day	01	02	03	04	05	06	07	08	09	10	11	12	13	14	15	16	17	18	19	20	21	22	23	24	25	26	27	28	29	30	
<b>Time 1</b>	06:47	06:47	06:47	06:46	06:46	06:46	06:46	06:45	06:45	06:45	06:45	06:45	06:45	06:59																	
<b>Reading</b>	35.7	36.8	35.9	36.9	36.4	36.7	35.5	37	37.1	35.7	36.5	35.6	37.7	37.3	-	-	-	-	-	-	-	-	-	-	-	-	-	-	-	-	-
<b>Time 2</b>	18:47	18:47	18:47	18:46	18:46	18:46	18:46	18:45	18:45	18:45	18:45	18:45	19:00	11:14																	
<b>Reading</b>	37.5	36.6	35.8	35.5	36.2	37.9	37.4	35.4	35.8	37.4	36.6	36.8	37.5	40.7	-	-	-	-	-	-	-	-	-	-	-	-	-	-	-	-	-

41.5  
41.0  
40.5  
40.0  
39.5  
39.0  
38.5  
38.0  
37.5  
37.0  
36.5  
36.0  
35.5  
35.0  
34.5  
34.0  
33.5  
33.0  
32.5

Apr 01 Apr 02 Apr 03 Apr 04 Apr 05 Apr 06 Apr 07 Apr 08 Apr 09 Apr 10 Apr 11 Apr 12 Apr 13 Apr 14 Apr 15 Apr 16 Apr 17 Apr 18 Apr 19 Apr 20 Apr 21 Apr 22 Apr 23 Apr 24 Apr 25 Apr 26 Apr 27 Apr 28 Apr 29 Apr 30

- Alarm History reports give detailed descriptions of alarm events for regulatory compliance showing alarm time, location and device; resolution time; acknowledgement and resolution commentary
- Device Connectivity reports provide real-time connectivity and data transmission statistics for every Sonicu monitoring point to document successful deployment, determine optimal device placement and aid in debugging offline issues that might arise.
- Alarm Resolution reports are essential reporting tools for Sonicu Enterprise users. Organizes systems by group, department or area and shows alarm totals, active or resolved status, and average time to acknowledge alarms.
- Login reports provide successful login data by name, date and time for administrators to identify problems and ensure all users are utilizing Sonicu to its fullest potential.



Sonicu's suite of monitoring solutions is complemented by a comprehensive array of management reporting tools to facilitate total system usability, reliability and confidence.

- Live, user-customized dashboards aggregate system-wide monitored data and provide superior operational visibility with real-time views across all departments and locations.
- Calibration reports contain all probe certification information at a glance to keep you compliant, including serial number, calibration date and a downloadable calibration certificate
- Fully automated temperature reports eliminate manual monitoring, logging and reporting, are regulatory compliant and provide daily minimum and maximum temperatures with real-time temperature
- Weekly Device Summary reports provide high-level weekly summaries for every deployed device, including number of alarm events, minimum, maximum and average readings.

The background image shows a laboratory setting with several scientists in white lab coats. In the foreground, a man with a beard and glasses, wearing a lab coat and blue gloves, is pouring a liquid from a small container into a larger white container. In the background, other scientists are working at their stations, some using microscopes. The Sonicu logo is overlaid on the left side of the image.

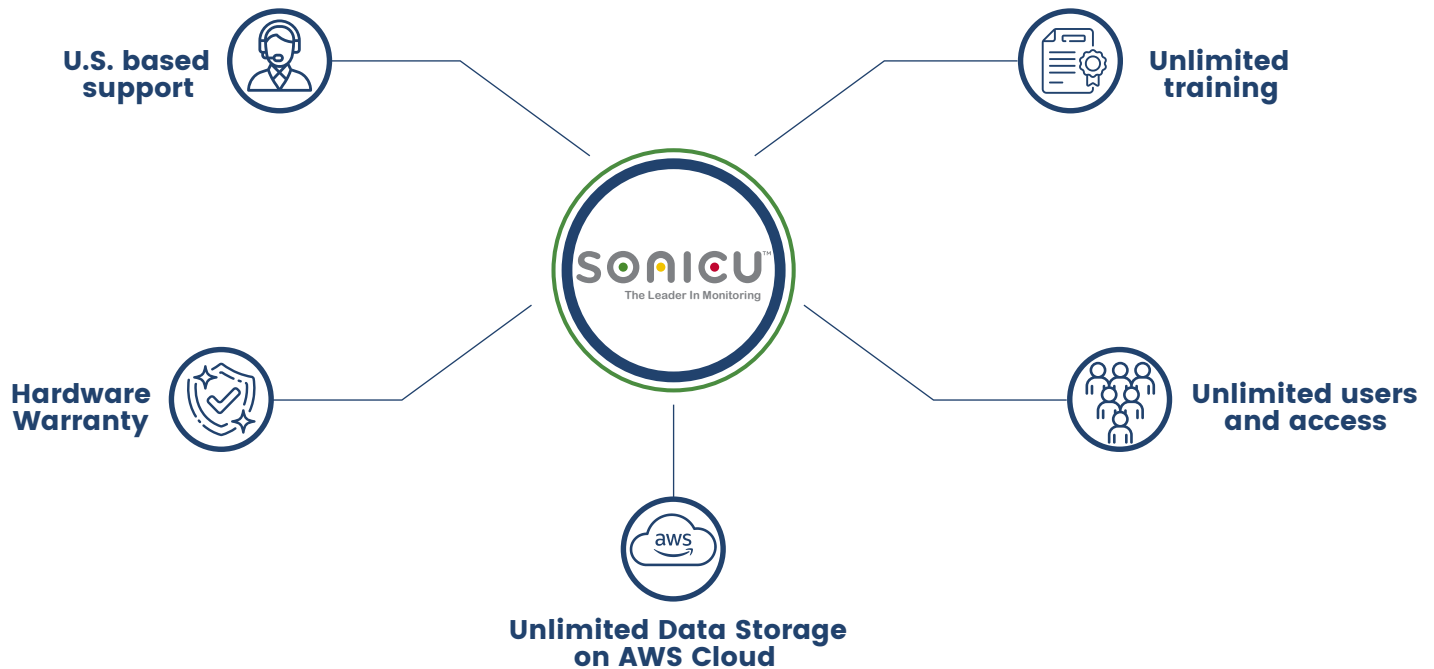
SONICU™



# BASED IN INDIANA:

Live customer support and training

## Sonicu Monitoring Benefits



## Our Enduring Commitment to Every Customer:

- Hardware under warranty during subscription
- Sonicu Academy for unlimited training
- Your data stored forever without limits
- Share your monitoring with everyone on your team and create groups and zones for role and permission-based management

**WATCH VIDEO**



**Julie Nagel**

Immunization Coordination,  
Hamilton County Health Dept.