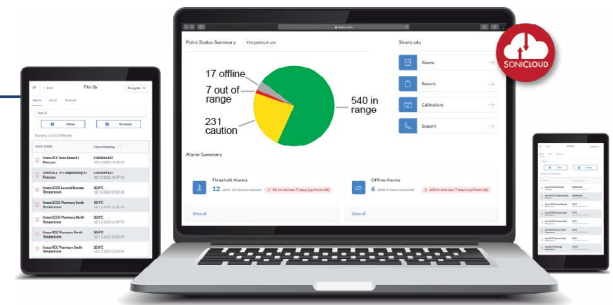


Differential Air Pressure Monitoring Kits

This kit includes everything you need to monitor differential air pressure 24/7 in real time. Applications include HVAC, pharmaceutical, construction, and healthcare.



FEATURES INCLUDE

- On-site monitoring via panel displays
- 24/7 remote monitoring from anywhere using any smart device or desktop
- Configurable alarms ensure pre-set differentials are maintained
- Secure, cloud-based platform
- Continuous data logging
- Automatically generated reports

Our kits are turnkey solutions for monitoring and maintaining required air pressure differentials, while providing compliance and easy reporting for regulated environments.

Industrial applications include maintaining a particle-free workplace, monitoring HVAC system health, determining correct air filter replacement frequency.

Why should I choose Sonicu?

Our system offers easy 24/7 access to your data from anywhere, and it notifies you when your attention is needed. Our components are simple to install and modular, so as your needs change it's easy to scale up or down to match your requirements.

Construction



HVAC Systems



Clean Rooms



Differential Air Pressure Monitoring Kits

Each Kit Includes

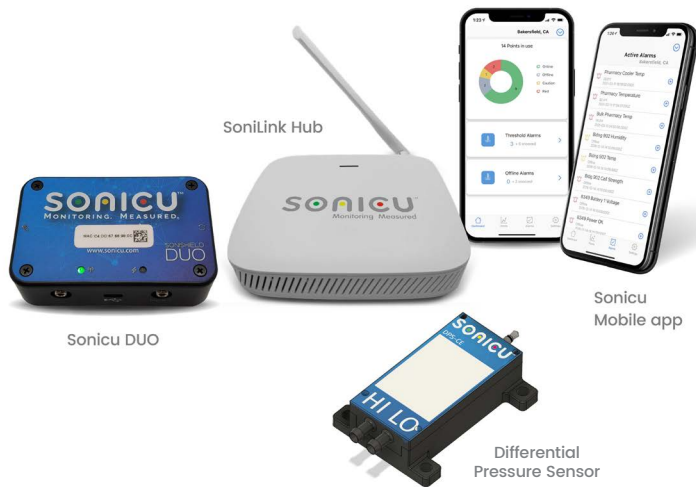


Kit Choices – Select by connectivity option below. Add Pick-Up Kit(s) as needed
 Each kit provides 1 monitoring point. Add kits as needed for your requirements.

Connectivity*	Kit No.	Each Kit Includes
WiFi	DUO-WF-DP	WiFi kit includes all items above. For local display add SoniShield View
4G LTE	DUO-LTE-DP	4G LTE kit includes all items above. For local display add SoniShield View
SoniLink	DUO-SL-DP	SoniLink kit includes all items above. For local display add SoniShield View option

*Ethernet and 900MHz kits are also available.

Kit with SoniLink Hub



Air Pressure Pick-Up Options

Each Pick-Up Kit includes 6' of air hose for your installation. Add Pick-Up Kits as needed.

Part No.	Description	Dimensions
101268	4" Air Duct Remote Pickup	4.125" x 3"
101269	8" Air Duct Remote Pickup	8.75" x 3"
101425	Wall Plate Remote Pickup	2.75" x 4.5"
101267	Ceiling Mount Remote Pickup	2.5" x 2" (1.4" hole needed for installation)



TECHNICAL NOTES

- Kits include easy-to-follow installation guides and online training videos. Wireless meters and sensors mount quickly, and live customer support is provided to all customers.
- From strict-tolerance critical-care healthcare and pharmaceutical environments to commercial HVAC filter monitoring, Sonicu wireless technology and cloud-based software platform provide easy deployment; accurate, reliable data and superior operational visibility.
- Uninterrupted Power Source switches from wall adapter to onboard rechargeable batteries during power outages.
- The secure SoniCloud platform is hosted on Amazon Web Services (AWS).
- Sensor-to-cloud data transmission requires no additional hardware or software.
- Data-Sync and onboard memory ensure all data is preserved in case of network interruption.
- Automated data logging and reporting eliminate manual data entry and streamline compliance.

