

# Non-Buffered Temperature Sensor

Specialized and designed for warm storage applications, Sonicu's **Non-Buffered Temperature Sensor** provides precise temperature measurement and control.

Whether it's blanket warmers, food warmers, or incubators, our sensor ensures that your assets are preserved at the desired temperature, meeting the specific requirements of healthcare, food service, and laboratory settings.

Our sensor is specifically engineered to deliver accurate temperature readings without the need for additional thermal protection.

\*Includes NIST Calibration Certificate



## FEATURES

- Real-time alerts and notifications
- Automated compliance reporting system
- Simple mobile app configuration, accessibility and monitoring
- US-based phone support
- Lifetime warranty with software subscription



## MONITORING SPECIFICATIONS

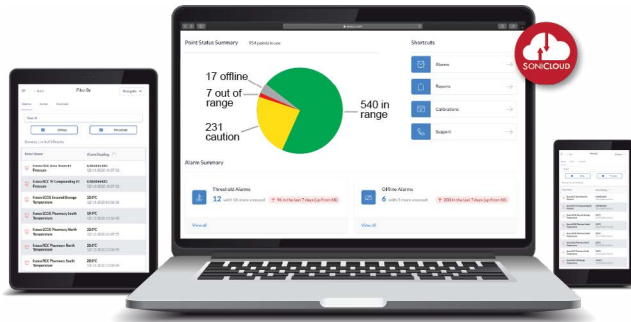
**Temperature Range** -55°C to +125°C / -67°F to 257°F

**Accuracy** +/-0.5°C



Experience precise temperature monitoring  
for your warm storage applications

# Our Kit Includes:



## SONICLOUD – SOFTWARE ACCESS

All Sonicu monitoring solutions include SoniCloud, a modern, scalable, monitoring platform that includes software and firmware updates, ensuring future compatibility and data storage.

## SONISHIELD DUO

The most powerful and easy-to-use wireless monitoring device available that wirelessly transmits critical sensor data to the SoniCloud platform for 24/7 automated monitoring, visibility, and regulatory compliant reporting.



## NON-BUFFERED TEMPERATURE SENSOR

This sensor is designed for warm storage applications including blanket warmers, food warmers, incubators, etc.

Also used for cold storage when a buffered sensor is not needed.



## POWER ADAPTER



## DOOR CONTACT SENSOR (OPTIONAL)

