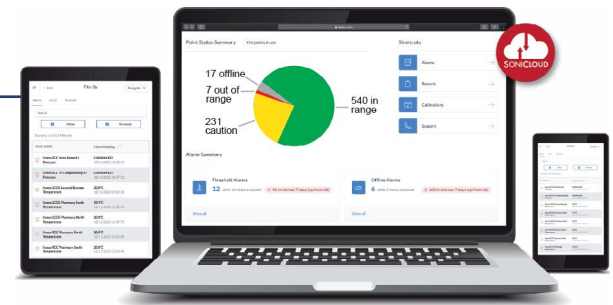


Ultra-Low & Cryogenic Wireless Temperature Monitoring Kits



Sonicu's Ultra-low & Cryogenic Monitoring Kit is specifically designed for the rigors of research laboratories, universities and CROs.

Available sensors are appropriate for full-length dewar monitoring as well as minus 80 freezers, and Sonicu SMART alarming provides instant notification on-site and off 24/7 via email, SMS or phone call in the event of equipment failure or temperature excursion.

Additionally, secure wireless data transmission and cloud connectivity allow Sonicu to deploy and operate independently of existing IT and building automation systems, ensuring total asset protection and proper notification at all times.

Sonicu's stand-alone system is completely scalable as needs change, allowing the addition of more kits and monitoring points when necessary.

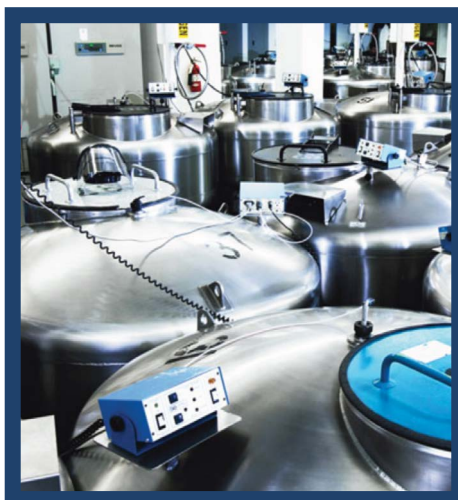
FEATURES INCLUDE

- Fully configured, turnkey package includes everything needed to immediately monitor ultra-low and cryogenic temperatures for protection and compliance.
- Devices install easily and securely transmit data independent of IT networks via embedded 4G LTE or over existing networks with Wi-Fi or Ethernet connections.
- Local alarming and display options available.
- Redundant power supplies and on-board data storage on all Sonicu devices eliminate data loss from power loss or network interruption.
- Kits include NIST-traceable sensors with calibration certificates; Sonicu SNAP calibration eliminates recalibration downtime and expense.
- Advanced alarming provides alarm delays, repeating notification and alarm escalation to prevent alarm fatigue while ensuring proper parties are notified.

Research Labs



Liquid Nitrogen Dewars



-80° Freezers



Ultra-Low and Cryogenic



Kit Choices – Select by Type, Connectivity and number of devices (single or dual)
 Single kits monitor 1 device. Dual kits monitor 2 devices. Add kits as needed.

Type/Connectivity*	Kit No.	Each Kit Includes
Ultra-Low WiFi – Single	DUO-WF-UL	SoniShield Duo, Ultra-Low sensor, power/charger, 6' cable, mounting supplies
Ultra-Low 4G LTE – Single	DUO-LTE-UL	SoniShield Duo, Ultra-Low sensor, power/charger, 6' cable, mounting supplies
Ultra Low Temp – Single	DUO-SL-UL	SoniLink, Ultra-Low sensor, power/charger, 6' cable, mounting supplies
Ultra-Low WiFi – Dual	DUO-WF-UL-UL	SoniShield Duo, 2 Ultra-Low sensors, power/charger, 6' and 15' cable, mounting supplies
Ultra-Low 4G LTE – Dual	DUO-LTE-UL-UL	SoniShield Duo, 2 Ultra-Low sensors, power/charger, 6' and 15' cable, mounting supplies
Ultra Low Temp – Dual	DUO-SL-UL-UL	SoniLink, 2 Ultra-Low sensors, power/charger, 6' and 15' cable, mounting supplies
Cryogenic WiFi – Single	DUO-WF-CR	SoniShield Duo, Cryogenic sensor, power/charger, 6' cable, mounting supplies
Cryogenic 4G LTE – Single	DUO-LTE-CR	SoniShield Duo, Cryogenic sensor, power/charger, 6' cable, mounting supplies
Cryogenic 4G LTE – Single	DUO-SL-CR	SoniLink, Cryogenic sensor, power/charger, 6' cable, mounting supplies
Cryogenic WiFi – Dual	DUO-WF-CR-CR	SoniShield Duo, 2 Cryogenic sensors, power/charger, 6' and 15' cable, mounting supplies
Cryogenic 4G LTE – Dual	DUO-LTE-CR-CR	SoniShield Duo, 2 Cryogenic sensors, power/charger, 6' and 15' cable, mounting supplies
Cryogenic 4G LTE – Dual	DUO-SL-CR-CR	SoniLink, 2 Cryogenic sensors, power/charger, 6' and 15' cable, mounting supplies

*SoniShield Display can be added to any Temperature Monitoring kit with the Part Number 116000

NOTE: Meters feature on-board battery backup in case of power failure.

NOTE: Door open/close sensors also available.

Kit with SoniLink Hub



METER SPECIFICATIONS

Meter	Description	Dimensions
SoniShield Duo	2 input port	3.87" x 2.51" x 1.2"

NIST CALIBRATED SENSORS WITH CERTIFICATIONS

Part No.	Description	Range	Accuracy
100260	Ultra-Low	-100°C to 0°C	+/- .5°C
100261	Cryogenic	-205°C to 0°C	+/- .5°C

INSTALLATION NOTES



- Quick Start Installation guides and videos help get customers up and running quickly.



- Online SoniCloud training video series provides step by step tutorial for setting up new accounts, users, alarms, reports, and much more.



- Unlimited phone access to customer/tech support via Sonicu staffed Help Desk.



- Sonicu professional installation option available to assist clients on-site., repeating notification and alarm escalation to prevent alarm fatigue while ensuring proper parties are notified.

SONICLOUD NOTES

- The secure SoniCloud platform is hosted on Amazon Web Services (AWS).
- Sensor-to-cloud data transmission requires no additional hardware or software.
- Data-Sync and on board memory ensure all data is preserved in case of network interruption.
- Automated data logging and reporting eliminate manual data entry and streamline compliance.

