

SoniShield Duo

Compatible with any combination of two Sonicu NIST certified digital sensors, the Duo utilizes the most advanced wireless technology to provide the most efficient and simple wireless monitoring experience available.

- Asset Protection
- Compliance Automation
- Operational Efficiency

Overview

Onboard Bluetooth enables a wireless local display ideal for vaccine compliance and a powerful SoniCloud App wirelessly configures the Duo in seconds.

Built-in rechargeable battery and on-board memory provide unparalleled redundancy for continuous monitoring.

The SoniShield Duo is ideal for monitoring refrigerators, freezers, ambient conditions, room pressure, and other areas where monitoring is needed.

Coupled with the powerful new mobile app (for Android and iOS), users experience unsurpassed visibility and convenience. Everyday operations like responding to temperature alarms or viewing trended sensor data are quickly accomplished.

SoniShield Display:

Easy-to-Read, E-Ink Display



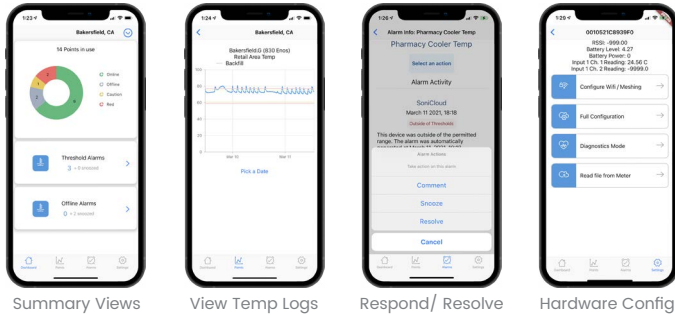
Data display is supported by the SoniShield Duo's onboard Bluetooth and is perfect for vaccine refrigerators or freezers, ambient conditions, and other areas where a local display is desired.



Our Advantages

- Sonicu solutions deploy quickly and support WiFi, 4G/5G LTE, Ethernet, and Ethernet with
- Cell Failover options.
- On-board memory storage protects data during network interruptions and automatically uploads stored data to SoniCloud via DataSync.
- When a power outage occurs the Duo automatically switches from 110V operation to battery power and continues automated monitoring.
- Sonicu's SNAP Calibration Program ensures regulatory compliance by providing freshly calibrated NIST sensors with NIST Certificates before current sensors expire.

Android and iOS App Functions



Additional App Functions: Enterprise dashboard, active alarm summary, alarm details, network connectivity, configuration, file upload, zone view, and more!

Applications & Industries

Cold temperature, extended range for -80°C ULT, ambient temp and humidity, solid and glycol buffered product simulator, LN₂, room air pressure.

Industries include: hospitals, pharmaceutical, public health clinics, research labs, data centers, food safety, & industrial.

Specifications

External Ports:	Two sensor input ports One Micro-USB charging port
Construction:	Rugged, ABS plastic housing
Dimensions:	3.87" x 2.51" x 1.20"
Weight:	0.39 lbs.
Radio Protocols:	4G/5G Cellular, with GPS Wi-Fi 802.11 b/g/n 2.4GHz Wi-Fi 802.1x authentication LoRaWAN
Power Modes:	5200 mAh, Li-ion polymer 3.7V long-life rechargeable battery 5V 1A DC adapter, 6ft cable (included)
Enterprise Security:	Wi-Fi: WPA2 Cellular: standard encryption to tower, virtual private network (VPN) to cloud, completely secure
Operating Temp:	-10°C to $+40^{\circ}\text{C}$
Humidity:	10 to 85% RH, non-condensing
Extension Cables:	Flat 6-ft, 15-ft and 25-ft
Mounting:	Adhesive or Magnetic/Screw Mount options available
Warranty:	Warranted for duration of Sonicu Service Agreement

Part Number and Description

Duo-WF	SoniShield-Duo-WiFi
Duo-SL	SoniShield-Duo-900 MHz
Duo-LTE	SoniShield-Duo-Cell (4G/5G LTE)

Digital Sensor Options (NIST Calibrated)

100234	Glycol Buffered Temperature Range: -55°C to $+30^{\circ}\text{C}$ Accuracy: $\pm 0.5^{\circ}\text{C}$									
101234	Solid Buffered Temperature Range: -55°C to $+30^{\circ}\text{C}$ Accuracy: $\pm 0.5^{\circ}\text{C}$									
100181	Non-Buffered Temperature Range: -55°C to $+125^{\circ}\text{C}$ Accuracy: $\pm 0.5^{\circ}\text{C}$									
101279	Warm Buffered Temperature Range: 0°C to $+160^{\circ}\text{C}$ Accuracy: $\pm 0.5^{\circ}\text{C}$									
114200	Differential Pressure, DPS Range: ± 4 inches water column Accuracy: $\pm 0.25\%$									
114100	Ambient Temperature & Humidity									
	<table border="1"> <thead> <tr> <th></th> <th>Range</th> <th>Accuracy</th> </tr> </thead> <tbody> <tr> <td>Temperature</td> <td>-10°C to $+80^{\circ}\text{C}$</td> <td>$\pm 0.4^{\circ}\text{C}$</td> </tr> <tr> <td>Humidity</td> <td>0-100% RH</td> <td>$\pm 0.25\%$</td> </tr> </tbody> </table>		Range	Accuracy	Temperature	-10°C to $+80^{\circ}\text{C}$	$\pm 0.4^{\circ}\text{C}$	Humidity	0-100% RH	$\pm 0.25\%$
	Range	Accuracy								
Temperature	-10°C to $+80^{\circ}\text{C}$	$\pm 0.4^{\circ}\text{C}$								
Humidity	0-100% RH	$\pm 0.25\%$								
100260	ULT (ultra-low temps) 4" Stainless Sheath, Range: -205°C to 0°C Accuracy: $\pm 0.5^{\circ}\text{C}$									
100261	Cryogenic (LN ₂) 15.5" Stainless Sheath, Range: -205°C to 0°C Accuracy: $\pm 0.5^{\circ}\text{C}$									

Accessory Items (order separately)

010503	USB Power Extension (adds 6 ft to Duo power cable)
113600	Magnetic/Screw Mount

SoniShield Duo Dimensions

