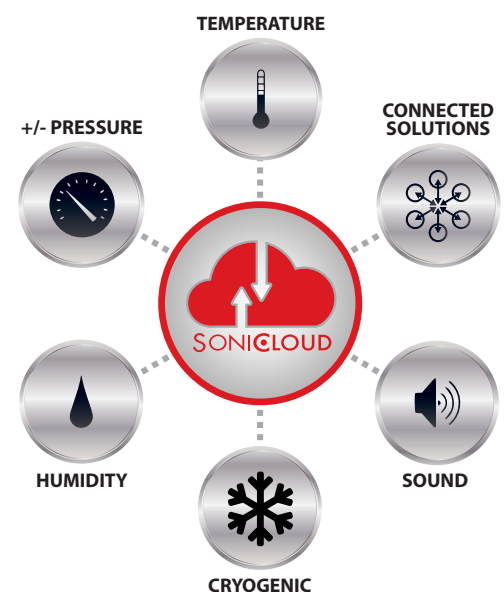


Enterprise Monitoring

The **Smart Choice** for remote wireless monitoring.

- Easily deployed sensors with SMART Alarms provide superior asset protection.
- 24/7 automated data logging and reporting eliminates manual processes.
- Full suite of management tools simplifies regulatory compliance.



Sonicu Enterprise Monitoring consolidates and automates all monitoring, alarming and reporting solutions onto one platform, providing superior operational visibility, on-site and off, across your entire enterprise and leveraging scalability to increase efficiency, improve safety and reduce costs.



TEMP/HUMIDITY

Temperature monitoring, alarming and reporting for healthcare, surgical suites, R & D labs, pharmacy, warehousing and distribution.



SOUND

Healthcare HCAHPS improvement, critical care areas and NICUs as well as construction and industrial applications.



COLD/HOT

Monitor and log all cold/warm storage applications including medication/vaccines, blood storage, walk-in/reach-in refrigeration, food warmers and service, incubators, blanket warmers and industrial applications.



+/- PRESSURE

Differential air pressure and air changes per hour (ACH) monitoring for healthcare, pharmaceutical compounding, Industrial and construction site containment and HVAC diagnostics.



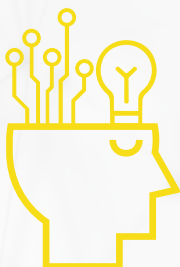
CRYO/ULT

Sonicu's first-to-market digital cryo/ULT sensors are ideally suited for life science, university and research laboratories, CROs, bio-repositories and minus 80-degree freezers.



CONNECTED SOLUTIONS

Modbus and 4-20 mA capable devices work with commercially available sensors to connect analog sensors and smart machines for virtually any monitoring application.



Sonicu's Enterprise Monitoring solution consolidates all monitoring applications, including temperature, humidity, air pressure differential, sound and connected solutions, into one platform.

SoniCloud, Sonicu's cloud-based platform, is hosted on Amazon Web Services and enables real-time access to and viewing of all monitored points via a client-specific, customizable dashboard. Monitoring, alarming, logging and reporting are fully automated and standardized across your entire enterprise.

Sonicu Enterprise wireless monitoring meets or exceeds compliance standards of The Joint Commission, HFAB, CDC, FDA, BOP, and VFC program.

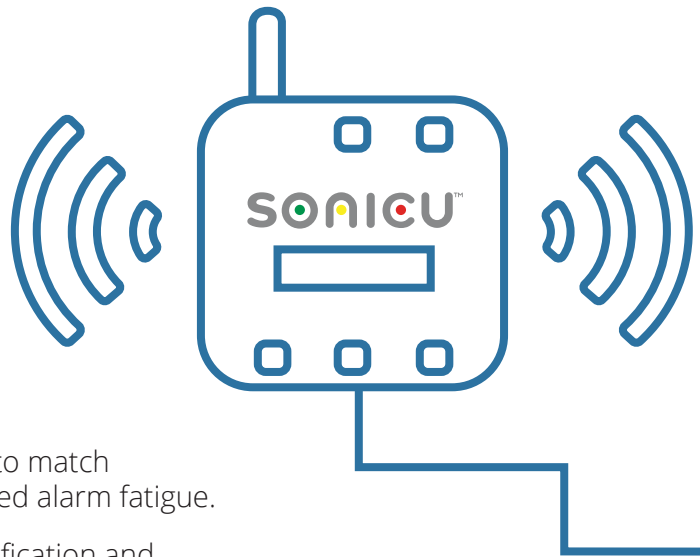
Why Sonicu?

Safety, compliance, efficiency & savings.

Safety:

Smart alarming sets Sonicu apart when it comes to protecting assets and the public. SMART alarm software features include:

- Custom thresholds with user-set high/low buffers to match monitored asset/equipment parameters for reduced alarm fatigue.
- Off-line alarm features such as batch alarming notification and auto-clear for improved operational efficiency.
- Alarm reminders to ensure all prior alarms have been addressed and cleared.
- Tiered, escalatable alarming to ensure proper notification goes to the right people at the right time.



Effortless regulatory compliance:

- Consistent automated logging and auto-formatted reporting downloads streamline regulatory compliance.
- Intuitive software allows annotation and corrective action history to be included in regulatory reporting.
- Sonicu makes calibration plug-and-play. SNAP Calibration eliminates the downtime, expense and administrative worries of annual or recurring probe calibration.

Save time and money:

- Recover lost hours and labor costs consumed by manual monitoring and hand logging.
- SaaS-based platform requires no IT resources, network equipment, additional software or maintenance costs.
- Plug-and-play capability virtually eliminates installation costs.

All Sonicu monitoring solutions are:

Easily implemented and fully scalable without hardwiring or expensive retrofits.

Completely automated to eliminate manual monitoring, logging and reporting.

Totally secure and operate independently of existing IT infrastructure.

Warranted and supported by Sonicu's dedicated support team.

Cost-effective.

“Our impetus in doing this was to take a look at our efficiencies. How could we streamline our processes so that we could further focus on service delivery and the overall patient guest experience?”

Martha Rardin,
Director of Nutrition and Dietetics
Hendricks Regional Health

Monitoring What Matters:

- Healthcare
- Pharmaceuticals
- Life Science
- Food Safety
- Warehousing
- Manufacturing
- Distribution



Sonicu Wireless Remote Monitoring
19 West Main Street, Greenfield, IN 46140
Toll-Free: 844-4SONICU • Direct: 317.468.2345
Fax: 317.586.4804 • Email: info@sonicu.com

Sonicu Support

Sonicu provides the best monitoring technology available and supports it with one goal in mind – your success.



Sonicu Academy

Sonicu Academy provides customers with information and insight to optimize the Sonicu platform and maximize user experience.



Online Training

Sonicu Quick Start guides accompany every order, and online video tutorials cover a variety of topics, including user groups, notifications and alarms, logging on, and much more.



Installation Team

Professional installation teams quickly get your system deployed and optimized.



Customer Support

Sonicu customers have 24/7 access to online knowledge base and unlimited access to live help desk and technical support during business hours.



Account Management

Account managers provide updates, optimization strategies and valuable feedback.



Professional Services

Sonicu provides on-site surveys with design and implementation services.