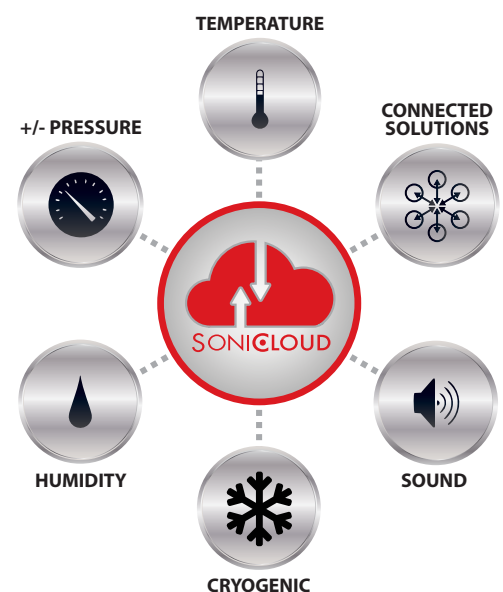






Pharmaceutical Monitoring

The **Smart Choice** for remote wireless monitoring.

- Easily deployed sensors with SMART Alarms provide superior asset protection.
- 24/7 automated data logging and reporting eliminates manual processes.
- Full suite of management tools simplifies regulatory compliance.



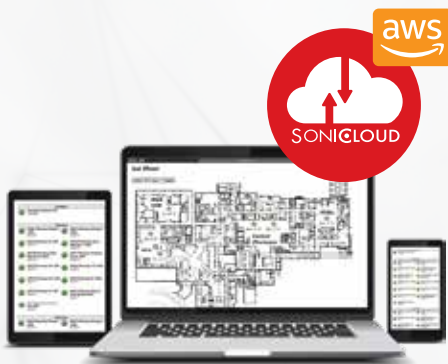
From Good Manufacturing Practices through warehousing, distribution and retail, Sonicu wireless monitoring technology provides easily-implemented, cost-effective solutions for unsurpassed safety and effortless regulatory compliance.

-  Temperature/Cold Storage and pharmaceutical/vaccine monitoring for medication refrigerators, laboratory and pharmaceutical research.
-  Ambient temperature/humidity for distribution centers, warehousing and storage and clinics.
-  High-resolution air pressure differential for compounding rooms, clean rooms and other pressure-sensitive environments with resolution to plus or minus one percent of full scale.
-  Custom monitoring applications via Modbus/4-20 mA for connections to a wide array of commercially available sensors.

Animal Health 

MAXOR
NATIONAL PHARMACY SERVICES COMPANY

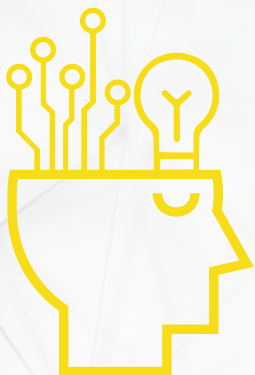
Morris & Dickson



Sonicu's Pharmacy sector monitoring solutions consolidate all monitoring, compliance reporting and management applications, into one platform.

SoniCloud, Sonicu's cloud-based service, enables real-time access to and viewing of all monitored points in various locations throughout an entire system via a client-specific, customizable dashboard. Monitoring, alarming, logging and reporting are fully automated and standardized across your entire enterprise.

Sonicu wireless monitoring meets or exceeds GMP compliance standards as well as those of The Joint Commission, VAWD®, FDA, USP, and BOP.



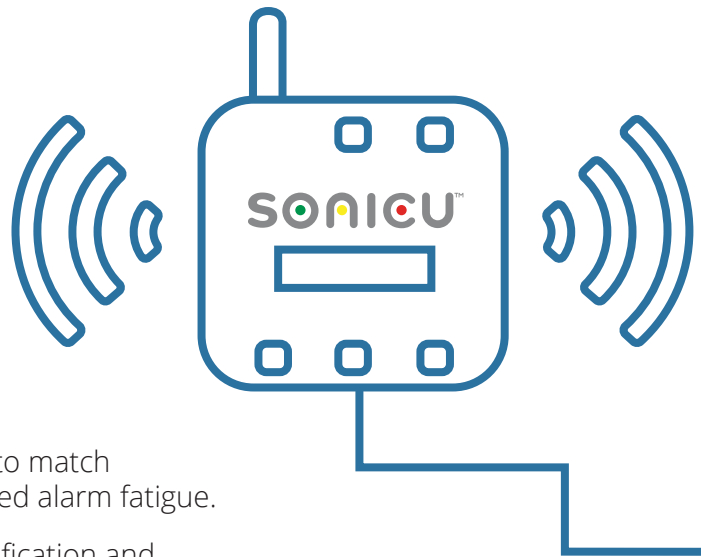
Why Sonicu?

Safety, compliance, efficiency & savings.

Safety:

Smart alarming sets Sonicu apart when it comes to protecting assets and the public. SMART alarm software features include:

- Custom thresholds with user-set high/low buffers to match monitored asset/equipment parameters for reduced alarm fatigue.
- Off-line alarm features such as batch alarming notification and auto-clear for improved operational efficiency.
- Alarm reminders to ensure all prior alarms have been addressed and cleared.
- Tiered, escalatable alarming to ensure proper notification goes to the right people at the right time.



Effortless regulatory compliance:

- Consistent automated logging and auto-formatted reporting downloads streamline regulatory compliance.
- Intuitive software allows annotation and corrective action history to be included in regulatory reporting.
- Sonicu makes calibration plug-and-play. SNAP Calibration eliminates the downtime, expense and administrative worries of annual or recurring probe calibration.

Save time and money:

- Recover lost hours and labor costs consumed by manual monitoring and hand logging.
- SaaS-based platform requires no IT resources, network equipment, additional software or maintenance costs.
- Plug-and-play capability virtually eliminates installation costs.

All Sonicu monitoring solutions are:

Easily implemented and fully scalable without hardwiring or expensive retrofits.

Completely automated to eliminate manual monitoring, logging and reporting.

Totally secure and operate independently of existing IT infrastructure.

Warranted and supported by Sonicu's dedicated support team.

Cost-effective.

“Our refrigeration system was monitored manually; a staff member would go to each unit and record the temperature on a handheld thermometer. The problem with this type of monitoring is that you only know what the temperature is at the time of the reading. How do you know what is happening the other 23 hours and 59 minutes?”

Tim Livesay,
Pharmacy Director
Hancock Regional Hospital

Monitoring What Matters:

- Healthcare
- Pharmaceuticals
- Life Science
- Food Safety
- Warehousing
- Manufacturing
- Distribution



Sonicu Wireless Remote Monitoring
19 West Main Street, Greenfield, IN 46140
Toll-Free: 844-4SONICU • Direct: 317.468.2345
Fax: 317.586.4804 • Email: info@sonicu.com

Sonicu Support

Sonicu provides the best monitoring technology available and supports it with one goal in mind – your success.



Sonicu Academy

Sonicu Academy provides customers with information and insight to optimize the Sonicu platform and maximize user experience.



Online Training

Sonicu Quick Start guides accompany every order, and online video tutorials cover a variety of topics, including user groups, notifications and alarms, logging on, and much more.



Installation Team

Professional installation teams quickly get your system deployed and optimized.



Customer Support

Sonicu customers have 24/7 access to online knowledge base and unlimited access to live help desk and technical support during business hours.



Account Management

Account managers provide updates, optimization strategies and valuable feedback.



Professional Services

Sonicu provides on-site surveys with design and implementation services.