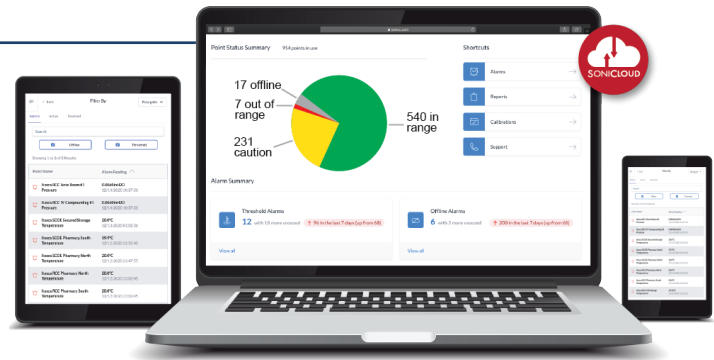


# SoniCloud Wireless Monitoring Platform



SoniCloud is a robust, secure cloud-based platform that aggregates system-wide monitored data to a dashboard, providing web-based access to critical information from anywhere.

## SONICLOUD PROVIDES

Unlimited users have access to monitored data from anywhere, providing consistent operational visibility.

Monitored data is automatically formatted to make regulatory compliance reporting effortless, helping healthcare, life science, pharma (GxP), and food industries meet the regulatory requirements of Joint Commission, CDC, AABB, AATB, CAP, HACCP, and FDA.

SoniCloud can be fully customized to meet specific monitoring criteria and needs. Alarm thresholds are user-set and sent to tailored and tiered recipients lists via text, email or phone 24/7.

Flexibility is assured with a variety of connectivity and data transmission options that include 4G LTE cellular, Wi-Fi, Ethernet, and WiFi with cellular failover for applications requiring additional redundancy.

With no additional hardware or software to purchase and no IT infrastructure to maintain or update, SoniCloud delivers scalability and flexibility. Evolving needs will not be constrained by existing IT architecture.

## OUR ADVANTAGES

- Hosted on Amazon Web Services (AWS), which maintains the U.S. government's strict data integrity & security requirements.
- Alarming with buffers and delays to prevent alarm fatigue; tiered alarm escalation and notifications to users by text, email or phone call 24/7, on-site and off.
- All calibration data and a full suite of reports facilitate total system usability, reliability and confidence.
- Unlimited data archiving and custom, automated reporting simplifies regulatory compliance and provides management insight.
- Over-the-air firmware updates, enhancements and new features initiated by Sonicu directly to active gateways.
- No additional hardware or software needed; eliminates IT footprint and maintenance.

## APPLICATIONS & INDUSTRIES



Healthcare



Food Service



Research/  
Laboratories



Industrial/  
Manufacturing



Building  
Automation

CELL



WIFI



ETHERNET

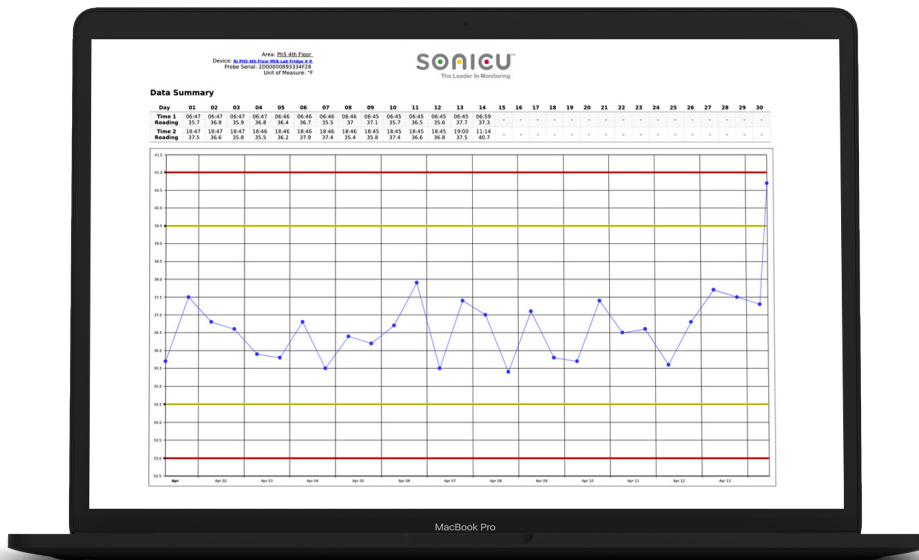


Sonicu provides access, alarming and archiving 24/7/365 via any internet-enabled device.

# Compliance and Operational Reporting



# Excursion Report

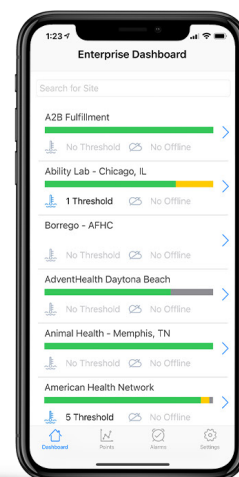


# SoniCloud Network Connectivity Options

## Floorplan



## Status Summary and Enterprise Dashboard



# SoniCloud Network Connectivity Options



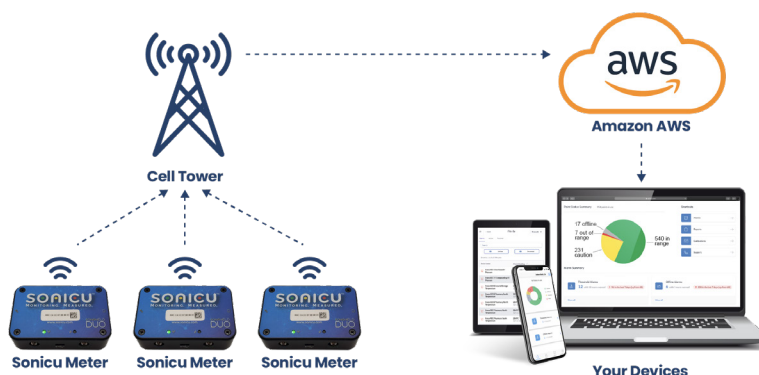
Sonicu technology provides fast, secure 24/7/365 connectivity to the cloud. Sensor data can transmit **ON** your network (via wi or ethernet) or **OFF** of your network (via 4G LTE cellular). Ethernet with 4G LTE Failover is available but not shown.

## WiFi ON Network



Optional 900MHz meters provide a boosted signal that can run either **ON** or **OFF** network via a Gateway. The gateway transmits to the cloud via Ethernet, 4G LTE, or Ethernet with 4G Failover. Refer to the diagrams to choose the option that is best for your organization. Contact a Sonicu sales representative for assistance.

## WiFi OFF Network



- Unlimited number of users
- Unlimited data storage
- Unlimited tech support

- Full Warranty for the life of your subscription.
- Unlimited On-Demand Training