

# SOUND MONITORING PROGRAM

The **Smart Choice** for ALL your monitoring needs.

# Why a Sound Monitoring Program for Healthcare?

Although the World Health Organization, U.S. Environmental Protection Agency and American Academy of Pediatrics all recommend that hospital noise levels not exceed 45 decibels, studies have shown that healthcare has grown consistently louder since 1960.

The negative consequences of noise have been well documented: increased cardiovascular stress, reduced sleep, poor patient experience, higher readmission rates, adverse effects on neonates, lower HCAHPS scores and decreased staff performance.

## How Sonicu Sound Monitoring Works

Reducing hospital noise with Sonicu is simple. Hospital noise monitoring is accomplished with Sonicu's patented, wireless Sound Indicating Meters (SIMs) that unlike sound audits, constantly monitor sound events and noise levels in a given area, unit or department.

Sound data gathered by the SIMs is sent to Sonicu's cloud-based platform where it is viewable in real time and auto-formatted into daily Sound Target Achievement Reports (STAR) to provide objective, actionable information about the sound environment.



### Safe & Secure

Utilizing Amazon Web Services, a world-renowned provider of data security, encryption, and multi-site data backup, SoniCloud provides 24/7/365 access to critical information from anywhere at any time. SoniCloud's Data-SYNC feature virtually eliminates data loss from power outage or other interruption.

## Sonicu STAR Report

**Sound Target Achievement Report (S.T.A.R.)**

Top 10 Sound Events for Friday, September 30, 2016:

L <sub>eq</sub> Events			L <sub>max</sub> Events		
Device Name	L <sub>eq</sub> (dBA)	Time	Device Name	L <sub>max</sub> (dBA)	Time
9N 23B	77.7	23:45 - 23:50	9N 21A	91.4	18:30 - 18:35
9N 23B	77.7	05:50 - 05:55	17W Hall	91.0	11:10 - 11:15
9N 23B	77.7	05:55 - 06:00	17W Hall	86.8	11:15 - 11:20
9N 23B	77.7	06:15 - 06:20	17E Hall	86.1	11:10 - 11:15
9N 23B	77.7	20:10 - 20:15	17N Hall	83.7	11:10 - 11:15
9N 23B	77.7	20:15 - 20:20	17E Hall	83.7	11:15 - 11:20
9N 23B	77.7	06:00 - 06:05	9N 23A	83.6	20:35 - 20:40
9N 23B	77.7	05:45 - 05:50	9N 25	83.4	17:10 - 17:15
9N 23B	77.7	06:10 - 06:15	9N 25	83.3	19:10 - 19:15
9N 23B	77.7	20:20 - 20:25	9N 25	83.3	16:10 - 16:15

Sonicu's STAR report shows managers precise times and locations for peak sound events as well as rolling average sound levels over five-minute durations so they can understand where and why sound events are occurring at any time, day or night.

STAR reports are automatically generated and can be pushed out to any number of recipients.

# What our customers are saying about us.



Download e-books at [sonicu.com](http://sonicu.com)

"Sonicu's monitoring system is unmatched in the industry, with real-time data and historical trends that are valuable tools in protecting our babies."

**Dr. Robert White**  
Neonatologist

South Bend Memorial Hospital

"We noticed dramatic improvements almost from the moment we installed Sonicu."

**Dr. Raylene M. Phillips**  
Director of Neonatology  
Loma Linda University  
Medical Center

"With Sonicu, we know which areas of our NICU are the quietest and we place our earliest babies in those environments."

**Stacy Zediker**,  
Development Specialist  
NICU at Gulf Coast  
Medical Center HCA



## Sonicu's Data Dashboard

Provides unlimited users 24/7 access from any smart device.

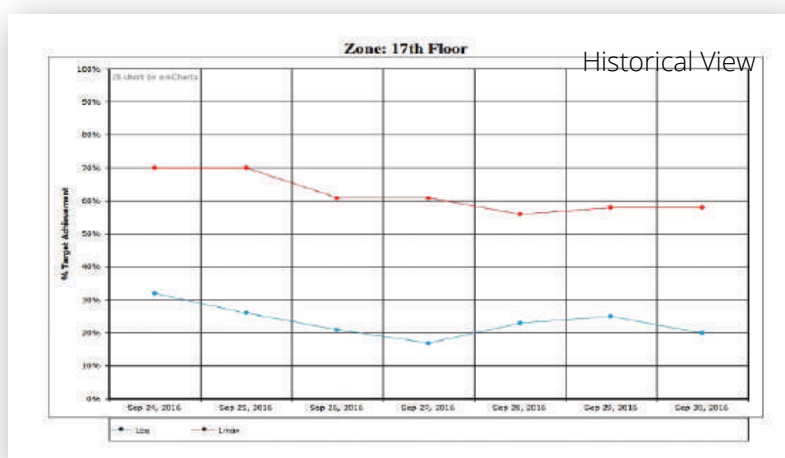
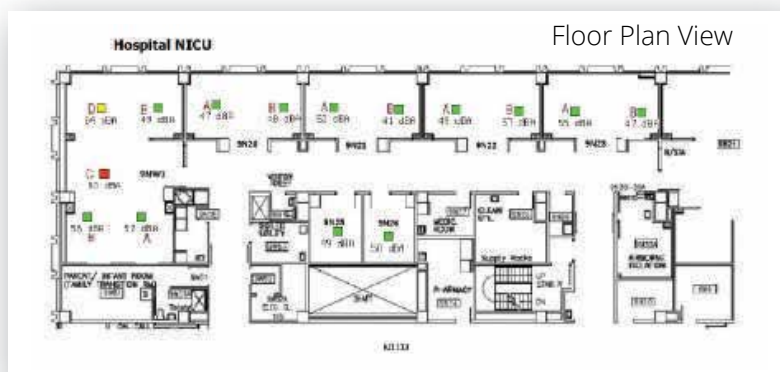


## Floor Plan View

With Sonicu's floor-plan view, users can see sound meters change color in real-time response to programmed set-points.

## Historical Data View

Access the SoniCloud dashboard for archived data and download historical reports.



---

---

“Sonicu’s monitoring system is unmatched in the industry, with real-time data and historical trends that are valuable tools in protecting our babies.”

**Dr. Robert White**  
Neonatologist  
South Bend Memorial Hospital

---

---

## Monitoring What Matters:

- Healthcare
- Pharmaceuticals
- Life Science
- Food Safety
- Warehousing
- Manufacturing
- Distribution



**Sonicu Wireless Remote Monitoring**  
19 West Main Street, Greenfield, IN 46140  
Toll-Free: 844-4SONICU • Direct: 317.468.2345  
Fax: 317.586.4804 • Email: info@sonicu.com

## Sonicu Support

Sonicu provides the best monitoring technology available and supports it with one goal in mind – your success.



### Sonicu Academy

Sonicu Academy provides customers with information and insight to optimize the Sonicu platform and maximize user experience.



### Online Training

Sonicu Quick Start guides accompany every order, and online video tutorials cover a variety of topics, including user groups, notifications and alarms, logging on, and much more.



### Installation Team

Professional installation teams quickly get your system deployed and optimized.



### Customer Support

Sonicu customers have 24/7 access to online knowledge base and unlimited access to live help desk and technical support during business hours.



### Account Management

Account managers provide updates, optimization strategies and valuable feedback.



### Professional Services

Sonicu provides on-site surveys with design and implementation services.